

Coming up

Saturday 14th March - St Patrick Day Party, Bulls Head, 7pm. Lots of singing, dancing, drinking and eating. Tickets will go on sale soon watch Facebook and the Village notice boards for details.

Thursday 19th March - WI - Sound Baths with Joanne Corsie, Church, 7:30pm. Competition: A musical instrument. New members and visitors welcome, £3.

Saturday 4th April - Seed Sowing Event at the Church, 2 – 4pm. This event is suitable to all and should help you to start your sowing activities for the Nailstone Village Show

Thursday 23rd April - St Georges Day Celebrations, Bulls Head, 7pm. Fish & Chips / Quiz / come dressed as a famous British person.

Saturday 16th May - Country and Western Night, Bulls Head, 7pm
Country & Western Dress / Hog Roast / Bucking Bronco (hopefully) / Line dancing / silly saloon games .

Saturday 20th June - Ladies Day at the Bull (not at Ascot), Bulls Head, time TBC – Daytime and Evening. Get glammed up and enjoy an afternoon tea, followed by a race night.

Pudding Club - Every last Monday of the month, Bulls Head, 7pm.

Coffee Morning - Every Tuesday, Church, 10:15am – 12pm

Church Service - 3rd Sunday every month

Little Fishes - Currently being held on 3rd Tuesday of the month, Church WI - 3rd Thursday of every month, Church, 7:30pm

Parish Council Meeting - last Wednesday of every month, Church, 7pm

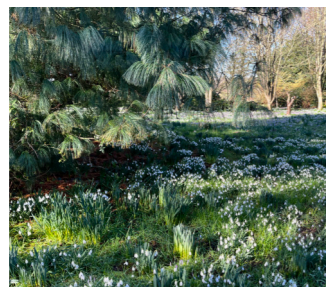
Craft Group - Fourth Thursday of every month or when required



Gardening Group

We eagerly await our first in-person meet-up of 2026, which we anticipate will take place in the latter part of March and will involve the cutting back and tidying of the Rock bed and Centenary bed. We are pleased that the planting in the Memorial Area is still looking smart despite the storms and we are more than ready to enjoy signs of Spring, including the flowering of the bulbs we planted last Autumn.

To fill our time, despite the seemingly endless rain, we have been garden visiting and planning for the upcoming season. Members visited the annual Orchid Festival at Kew Gardens in London, and a recent trip to Doddington Gardens in Lincolnshire as part of their bulb pageant, was really enjoyable. We were lucky with the weather and picked the only day so far in the year with blue sky for this visit! At home, many dahlias have been ordered and have arrived ahead of the new season in anticipation of the expanded classes at the next Village Show.



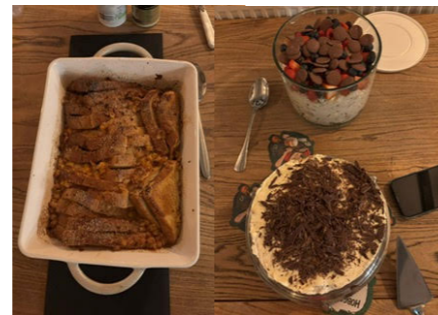
Soup Friday

Come and enjoy a bowl of hot soup and a roll together with a hot drink and dessert.

Nailstone All Saints Church
Friday 27th March at 12pm

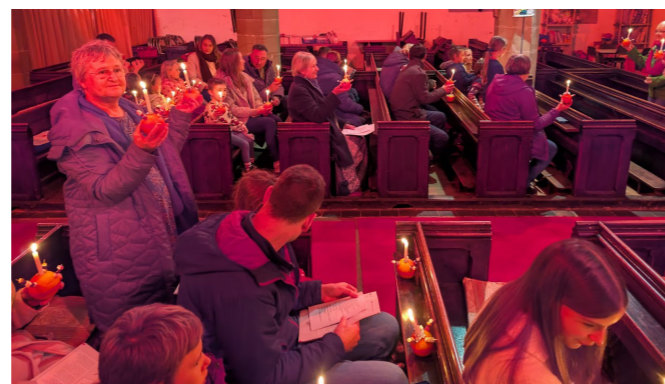
Pudding Club

The first Pudding event was held on 26.1.26, at the Bulls Head. There was a selection of puddings, including Eton Mess, Orange bread & butter pudding, pear & amaretto cheese-cake and guage crumble.



Christingle 2025

Nailstone All Saints Parish Church would like to thank those who attended the Christingle service in December. £86 was raised for The Children's Society.



Pancake night at the pub

Pancake night was celebrated in style at the Bulls head with pancake tossing, Pancakeathon and pancake eating. Top Tosser award goes to Brad with 66 tosses in one minute Top Pancakeathlete went to Anya. Baxter won the how may pancakes can you eat without feeling sick competition. Well done to all who took part.



NAILSTONE Newsletter



Gardening Group visit to the Doddington Gardens



Street lighting refurbishment update

The Parish Council is pleased to confirm that the street-lighting refurbishment has been completed ahead of schedule. This complex year-long project involved five agencies and covered the removal of outdated infrastructure and installation of modern, energy-efficient technology.

All PC street lights now meet current standards and are equipped with programmable, dimmable LED units aligned with the neighbouring LCC lighting stock. LEDs last longer, cost less to run and maintain, and significantly reduce the PC's carbon footprint. Each light also includes a smart communication cell that automatically alerts LCC to any maintenance needs under the Service Level Agreement, helping ensure consistent operation.

Alongside the physical works, the PC changed its electricity provider and entered into an SLA with LCC for electricity supply and maintenance. This will save approximately £600 per year and ensures ongoing upkeep of the assets.

The project required extensive coordination across multiple organisations. The PC successfully secured a Parish and Communities Initiative Fund grant, which covered 50% of the project cost. The PC extends its thanks to:

- Hinckley and Bosworth Borough Council and its Officers for prompt approval and administration of the P&CIF grant
- Leicestershire County Council and its Officers for coordinating the works, programming the lights,

- managing the SLA, and supporting the PC throughout
- National Grid for administering asset transfers on the national database
- Npower for assistance with billing enquiries
- County Cllr Melen for his invaluable liaison with LCC

Church Meadow footpaths

At the January meeting of the PC Cllrs considered the PC's next project, which is the resurfacing of the Breedon gravel footpaths within Church Meadow. The current footpaths are 26 years old and the Breedon gravel is now broken down and mossy and the wooden edging has rotted. Due to the potential cost of the project, 3 comparative quotations are required for the work, which are being sourced by Cllr Harris. The PC will look to offset the cost of the project through grant funding and anticipates the remainder will be funded with Stoneshollow Community Fund monies.

Policies and Budget for 2026-27

The PC reviewed and approved the 2026-27 budget at its January meeting and the budget is published on the PC's website along with the Annual Review of Internal Financial Control and Annual Review of Risk Management. The budget will also be published in the newsletter and, due to its size, will be slotted in as publishing space allows.



Venue: All Saint Church, 22 Church Road, Nailstone, CV130QH

CATEGORIES:

Fruit and Vegetables

1. 3 onions
2. 4 potatoes
3. 3 carrots
4. 5 runner beans
5. 2 courgettes
6. Plate of any 4 vegetables
7. Plate of any 3 salad vegetables
8. Longest runner bean
9. 5 medium/large tomatoes (same variety) Diameter greater than 1.5in/35mm
10. 5 small tomatoes (same variety) Diameter less than 1.5in/35mm
11. Plate of 4 apples (same variety)
12. Plate of 4 plums (same variety)
13. Funniest vegetable or fruit
14. Exhibit of any vegetable – surprise the judge!
15. Exhibit consisting of a flower (any), a fruit (any) and a vegetable (any)

Flowers and Plants

16. Vase of 3 roses (any variety)
17. Vase with a single flower stem with either a single or multi flower head (not dahlia)
18. Vase of 3 dahlias (any variety) larger than 4in/10cm
19. Vase of 3 dahlias (any variety) smaller than 4in/10cm

20. Vase of a single dahlia (any variety)
21. Vase of herbs (label stating type of herbs)
22. Vase of mixed cut flowers
23. Vase of sunflowers
24. Pot plant (flowering or non-flowering) (max size of pot 13cm/5in)
25. “Autumn” Floral arrangement. Space allowed 18 X 18in/45 x 45cm – height unlimited. Use of accessories/props - optional. Flowers and foliage may be purchased for the arrangement.
26. Tallest sunflower (one entry per household)

Cookery

27. Sourdough bread
28. 4 Plain scones
29. 4 Cheese and onion rolls
30. Chocolate cake
31. 4 Flapjacks (any flavour)
32. 5 pieces of Vanilla Fudge
33. Homemade jam (label stating type)
34. Homemade chutney (label stating type)
35. Homemade relish (label stating type)

Craft

36. Peoples Choice: Nailstone Night Life – maximum size 7 x 5in/18 x 13cm. Not framed
37. Photograph of a door knocker - maximum size 7 x 5in/18 x 13cm. Not framed
38. Original drawing/painting in any medium depicting Autumn – maximum size A4 (12 x 8in/30 x 21cm)
39. Knitted or crocheted soft toy
40. “Autumn” in any needlework discipline - maximum size A4 (12 x 8in/30 x 21cm)

Children

(Separate classes for 8yrs and under, and 9 – 14 years). Please put age of a child with each exhibit.

41. Winnie the Pooh inspired painted paper plate
42. Collaged picture of a scarecrow (template provided)
43. Flowers in a jam jar
44. 44. Painting of your family (any medium) - maximum size A4 (12 x 8in/30 x 21cm)

RULES FOR ENTRY

1. All exhibits to have been grown or made by the exhibitor (unless stated in schedule).
2. Only one entry per household in each class is allowed - except for photography classes where it is one entry per person.
3. Entries will not be allowed after the staging time.
4. Sunflowers must be grown in Nailstone Parish. Only one entry per household.
5. No exhibits can be removed before the end of the show at 4.00 pm.
6. All exhibits must be removed by 4.30 pm.
7. Nailstone Village Show organisers are not responsible for any losses or breakages.
8. There are no refunds on entry fees.
9. All children must be accompanied by an adult.
10. THE JUDGES’ DECISION IS FINAL.

TIMETABLE FOR THE DAY

Bring your entries and set them up	08.30 am to 10.30 am
Judging	11.00 am to Midday
Church open for exhibits viewing, Tombola, refreshments	1.30 pm to 3.30 pm
Prize giving	3.30 pm

